



## Consolite® Technology Ltd

St. Martins Business Park, Bells Lane, Zeals, Wiltshire, BA12 6LY, UK

Tel: +44 (0) 1747 840900 - E mail: sales@consolite.co.uk

www.consolite.co.uk - Certified to ISO9001:2015

### CTL-371 General Lighting Luminaire, LED, Exterior

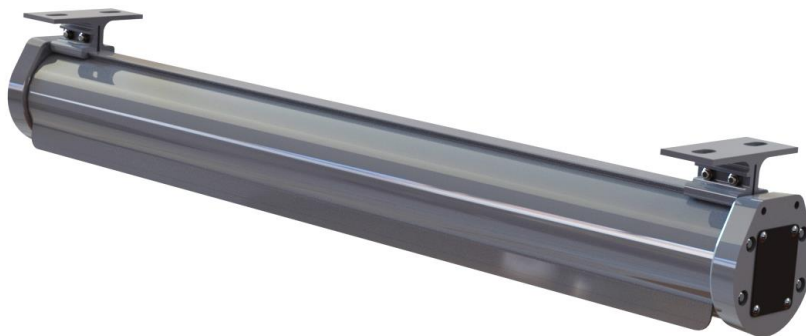
A range of surface mounting, exterior, general lighting LED luminaires for a wide variety of applications, offering different lighting modes. Robust design and construction makes them suitable for the most challenging of environments.

#### Features

- LED technology - low power, high reliability
- High output, neutral colour white light
- Rugged construction, extruded aluminium housing
- Painted grey for full protection
- IP67 rated for full weatherproofing
- Simple installation - wired ready for connection

#### Options

- Second mode red, low level white or green
- NVG compatibility
- 115V or 230V AC
- Variety of mounting options
- Variety of finishes
- Add on battery back-up module



Standard 1800lm variant



Unit with battery back-up module for emergency lighting



## Consolite® Technology Ltd

St. Martins Business Park, Bells Lane, Zeals, Wiltshire, BA12 6LY, UK

Tel: +44 (0) 1747 840900 - E mail: sales@consolite.co.uk

www.consolite.co.uk - Certified to ISO9001:2015

### Part Number Guide

The commonest variants are show below. Other combinations available on request.

P/No 115V	P/No 230V	Function	Output (lm)	IP Rating	Power (W)	Dimensions (mm)	Weight (kg)
CTL-371-010	CTL-371-410	Single mode – full bright white	1800	67	25	740 x 85 x 112	3.5
CTL-371-011	CTL-371-411	Single mode – white, dimmable	1800	67	25	740 x 85 x 112	3.5
CTL-371-020	CTL-371-420	Dual mode – bright white + LLW	1800	67	25	740 x 85 x 112	3.5
CTL-371-021	CTL-371-421	Dual mode – bright white + LLW, 2 neutrals	1800	67	25	740 x 85 x 112	3.5
CTL-371-022	CTL-371-422	Dual mode – bright white + red safety	1800	67	25	740 x 85 x 112	3.5
CTL-371-030	CTL-371-430	Dual mode – bright white + LLW NVG	1800	67	25	740 x 85 x 112	3.5
CTL-371-031	CTL-371-431	Dual mode – bright white + LLW NVG, 2 neutrals	1800	67	25	740 x 85 x 112	3.5
CTL-371-033	CTL-371-433	Dual mode – bright white + LLW enhanced NVG output	1800	67	25	740 x 85 x 112	3.5
CTL-371-034	CTL-371-434	Dual mode – bright white + green NVG	1800	67	25	740 x 85 x 112	3.5
CTL-371-035	CTL-371-435	Dual mode – bright white + green NVG, 2 neutrals	1800	67	25	740 x 85 x 112	3.5
CTL-371-036	CTL-371-436	Dual mode – bright white + green enhanced NVG output	1800	67	25	740 x 85 x 112	3.5
CTL-371-040	CTL-371-440	Single mode – full bright white	3600	67	48	1209 x 85 x 112	5.2
CTL-371-041	CTL-371-441	Single mode – white, dimmable	3600	67	48	1209 x 85 x 112	5.2
CTL-371-050	CTL-371-450	Dual mode – bright white + LLW	3600	67	48	1209 x 85 x 112	5.2
CTL-371-051	CTL-371-451	Dual mode – bright white + LLW, 2 neutrals	3600	67	48	1209 x 85 x 112	5.2
CTL-371-052	CTL-371-452	Dual mode – bright white + red safety	3600	67	48	1209 x 85 x 112	5.2
CTL-371-060	CTL-371-460	Dual mode – bright white + LLW NVG	3600	67	48	1209 x 85 x 112	5.2
CTL-371-061	CTL-371-461	Dual mode – bright white + LLW NVG, 2 neutrals	3600	67	48	1209 x 85 x 112	5.2
CTL-371-063	CTL-371-463	Dual mode – bright white + LLW enhanced NVG output	3600	67	48	1209 x 85 x 112	5.2
CTL-371-064	CTL-371-464	Dual mode – bright white + green NVG	3600	67	48	1209 x 85 x 112	5.2
CTL-371-065	CTL-371-465	Dual mode – bright white + green NVG, 2 neutrals	3600	67	48	1209 x 85 x 112	5.2
CTL-371-066	CTL-371-466	Dual mode – bright white + green enhanced NVG output	3600	67	48	1209 x 85 x 112	5.2
NA	CTL-371-923	Single mode – NVG compatible white, PWM dimmable	3600	67	48	1209 x 85 x 112	5.2

EX Zone 1 and Zone 2 variants are also available, shown on separate datasheets.

Battery back-up for emergency lighting can be provided through an add-on module, CTL-371-920, suitable for all variants of CTL-371 and CTL-461 lights. The module has full EX Zone 1 compliance and can be disconnected without affecting the IP rating.

The battery back-up module will add 215mm to the overall length, and less than 2kg to the weight of each light. Lights with battery back-up fitted can be ordered by adding -BB to the standard part number, e.g. CTL-371-XXX-BB.

Standard NVG output is balanced for situations where all lights in an area are dual mode. Enhanced NVG output is for cases where not all lights are dual mode.



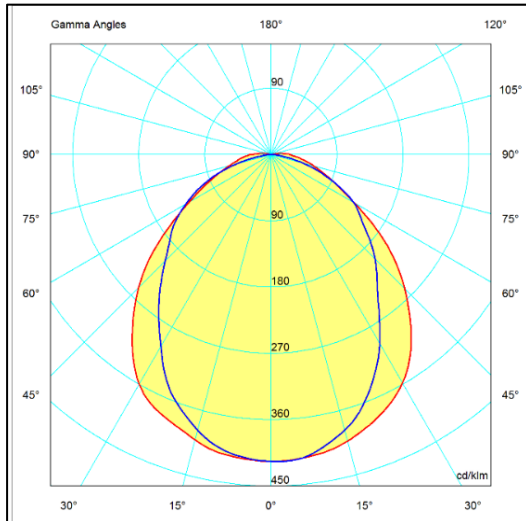
## Consolite® Technology Ltd

St. Martins Business Park, Bells Lane, Zeals, Wiltshire, BA12 6LY, UK

Tel: +44 (0) 1747 840900 - E mail: sales@consolite.co.uk

www.consolite.co.uk - Certified to ISO9001:2015

### Light output distribution



IES/LDT files available on request

### Standards

Electrical Installations in ships: Luminaires and Lighting Accessories IAW  
BS IEC 60092-306

Incorporating the following standards:

- Degree of protection BS EN 60529
- Electrical safety BS EN 60598-1
- Impact (Mechanical Strength) BS EN 60598-1
- EMC, emissions and immunity BS EN 60945
- Environmental testing IEC 60068

Photo-biological safety of Lamps and Lamp Systems BS EN 62471

Night Vision Device (NVD) compatibility DEF STAN 02-587 Part 3

Dual Mode Lighting DEF STAN 02-587 Parts 1 & 3

Total Harmonic Distortion (THD) Lloyds Rules and Regulations 2018

Radiated Susceptibility – Test No DRS02.B DEF STAN 59-411 Part 3

Mechanical Shock in Naval Vessels MAP 01-470

RoHS Directive 2011/65/EU

WEEE Producer Registration Number WEE/AU676OYF

### Operating Temperature Range

-35°C to +55°C, except for battery back-up units where normal range is +5°C to +30°C, and extended range is -30°C and +50°C but with reduced battery life and duration of light output.

### Installation

Installation details outlined in CTL-371-XXX-Non-EX-INST.

Connection points detailed in CTL-371-XXX-ID & CTL-371-XXX-Non-EX-INST

Consolite is a long established leader in night vision lighting for military platforms, designing and manufacturing lighting for NVGs for over 25 years, including lighting for aircraft, ships and ground use.

Consolite's design facility permits the calculation of lighting requirements for any space from a single compartment to an entire ship.

Consolite's test facility includes the latest equipment required for testing night vision compliance to any relevant standard plus goniophotometric equipment for full 360 degree light characterisation of luminaire output.