



# Consolite® Technology Ltd

St. Martins Business Park, Bells Lane, Zeals, Wiltshire, BA12 6LY, UK

Tel: +44 (0) 1747 840900 - E mail: sales@consolite.co.uk

Certified to ISO9001:2015

## CTL-950-XXX Small Boat Navigation Light

A range of LED based navigation lights ideally suited to small craft up to 50m in length. Robust design and construction make them suitable for the most challenging of environments. Careful selection and control of LED wavelengths and outputs ensures NVG compatibility while retaining full COLREG compliance.

### Features

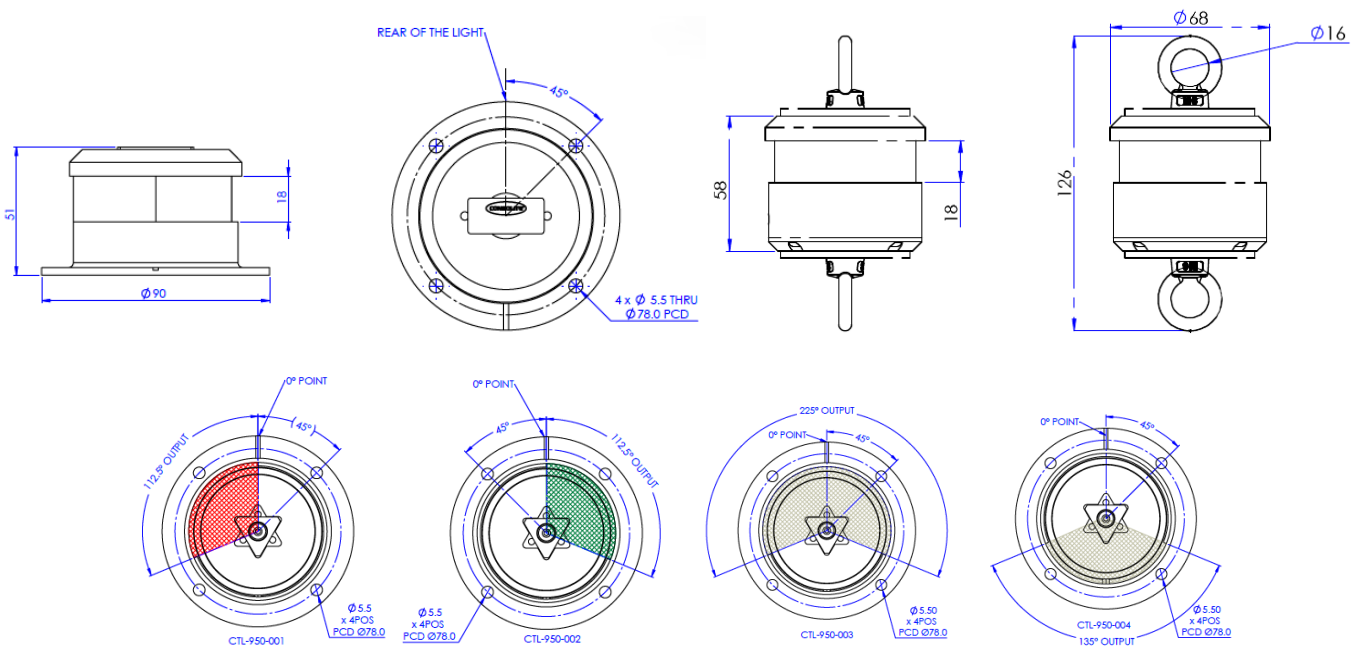
- LED technology - low power, high reliability
- Full COLREG compliance - intensity and colour
- NVG compliant without dimming
- Rugged construction
- Provided with flying leads

- Anodised for full protection
- IP67 rated for full weatherproofing
- Simple installation - connect to 24V DC
- Fixed or hoistable variants
- Heating for Arctic operations (optional)
- Glanded version for user connection (optional)

**CTL-950-00X Variants (Fixed)**



**CTL-950-01X Variants (Hoistable)**





# Consolite® Technology Ltd

St. Martins Business Park, Bells Lane, Zeals, Wiltshire, BA12 6LY, UK

Tel: +44 (0) 1747 840900 - E mail: sales@consolite.co.uk

Certified to ISO9001:2015

## Part Number Guide

The below table provides light output and angular distribution data

Part Number	Function	Colour	Range N.M.	Visible Angle	Intensity cd	NRI <sub>B</sub> **	Power W	Dimensions mm
CTL-950-001-x-x	Port	Red	3	112.5°	> 12	1.0E-3	2.4	51 x 90 x 90
CTL-950-002-x-x	Starboard	Green	3	112.5°	> 12	1.0E-5	2.7	51 x 90 x 90
CTL-950-003-x-x	Masthead	White	3	225°	> 12	2.0E-3	2.3	51 x 90 x 90
CTL-950-004-x-x	Stern	White	3	135°	> 12	1.0E-3	2.3	51 x 90 x 90
CTL-950-005-x-x	Anchor	White	3	360°	> 12	2.0E-3	3.4	51 x 90 x 90
CTL-950-006-x-x	Masthead	White	5	225°	> 52	3.0E-3	8.2	51 x 90 x 90
CTL-950-007-x-x	NUC/RIAM	Red	3	360°	> 12	1.0E-3	2.4	51 x 90 x 90
CTL-950-008-x-x	Towing	Yellow	3	135°	> 12	1.0E-3	2.4	51 x 90 x 90
CTL-950-011 *	Port	Red	3	360°	> 12	1.0E-3	3.5	126 x 68 x 68
CTL-950-012 *	Starboard	Green	3	360°	> 12	1.0E-5	4.2	126 x 68 x 68
CTL-950-013 *	Anchor	White	3	360°	> 12	2.0E-3	3.4	126 x 68 x 68

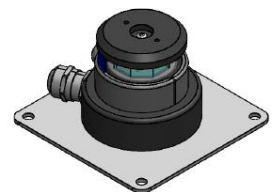
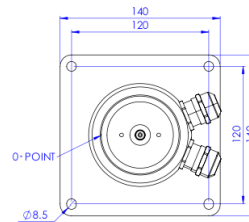
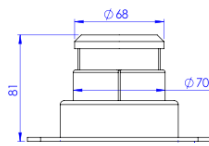
\* P/N CTL-950-01x are hoistable variants, not available with glands or heating.

\*\* Class B NVIS Radiant Intensity. Typical figures, compliant with UK Def Stan 02-587 Part 3.

Part number key	Description	Size
CTL-950-00x-0-x	No heating	
CTL-950-00x-H-x	Heating	
CTL-950-0xx-x-C	Connector	
CTL-950-00x-x-G	Glands	81 x 140 x 140 (see below)

## All units

IP Rating	67
Voltage	24V DC
Weight	< 0.5kg



## Standards

EN60529 - Degrees of Protection provided by Enclosures

COLREGS - International Regulations for Preventing Collision at Sea 1972

Def Stan 02-587 Pt 3 - Requirements for Lighting Systems Part 3 - Night Vision Device (NVD) Compatibility

Consolite is a long-established leader in night vision lighting for military platforms, designing and manufacturing lighting systems for NVGs for over 25 years, including lighting for aircraft, ships and ground use.

Consolite's design facility permits the calculation of lighting requirements for spaces from a single compartment to an entire ship.

Consolite's test facility includes the latest equipment required for testing night vision compliance to any relevant standard plus goniophotometric equipment for full 360 degree light characterisation of luminaire output.