



Consolite® Technology Ltd

St. Martins Business Park, Bells Lane, Zeals, Wiltshire, BA12 6LY, UK

Tel: +44 (0) 1747 840900 - E mail: sales@consolite.co.uk

Certified to ISO9001:2015

CTL-454 Flood Light

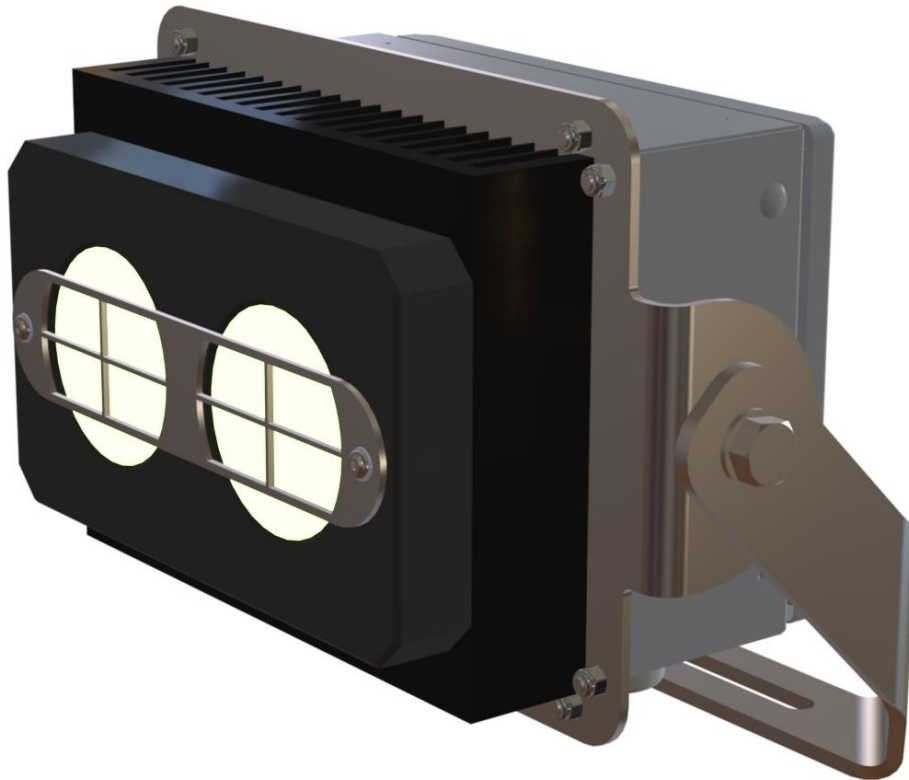
A range of LED flood lights for a variety of applications, such as hangar or crane lighting, offering great versatility with a number of different mounting configurations and output options

Features

High output, neutral white light
Rugged all-metal construction
IP67 to provide a high-level of protection
Simple installation – ready for connection
Wide variety of mounting configurations

Options

NVG compatibility
Double output
Dimming
24V DC operation
Dual mode High/Low operation
Different beam angles
Battery back-up (remote battery – within 50m)



Single mode floodlight P/N CTL-454-001



Consolite® Technology Ltd

St. Martins Business Park, Bells Lane, Zeals, Wiltshire, BA12 6LY, UK

Tel: +44 (0) 1747 840900 - E mail: sales@consolite.co.uk

Certified to ISO9001:2015

Part Number Guide:

CTL-454	Function	Output (lm)	Intensity (cd)	Beam (FWHM °)	Voltage (V AC)	Power (W)	Dimensions (mm) *	Weight (kg)
-001	Single mode, white	5400	2280	100	96-275	57	262 x 192 x 154	6
-004	Single mode, white double output,	10800	3900	100	96-275	115	262 x 192 x 147	6
-006	Single mode, white double output, dimmable	10800	3900	100	96-275	115	262 x 192 x 147	6
-011	Dual mode, high/low NVG white	4400	5900	55	96-275	57/12	262 x 192 x 154	6
-014	Dual mode, high/low NVG white, double output	8800	3200	100	96-275	115	262 x 192 x 147	6
-021	Single mode, NVG white	4400	5900	55	96-275	57	262 x 192 x 154	6
-023	Single mode, NVG white, dimmable	4400	1800	100	96-275	57	262 x 192 x 154	6
-024	Single mode, NVG white, double output, dimmable	8800	3200	100	96-275	115	262 x 192 x 147	6
-221	Dual mode, high/low NVG white, battery back up c/w Remote Battery Pack	4400	5900	55	96-275	57/12	262 x 192 x 154 360 x 325 x 163	6 15
-901	Dual mode, high/low, NVG white	4400	5900	55	24V DC	57	262 x 192 x 154	6
-908	Single mode, NVG green, double output, dimmable	3950	1440	100	96-275	115	262 x 192 x 147	6

* Excluding mounting bracket

Electrical interface details are shown on CTL-454-XXX-ID. Installation details shown in CTL-454-XXX-INST.

<p>Light output distribution:</p> <p>Varies with beam angle IES/LDT files available on request</p> <p>Remote Battery Pack (CTL-454-221):</p> <p>The battery back-up is ideally located internally Battery pack uses sealed Lead Acid batteries Discharge time - 4 hours at 70% light output Charge period - 16 hours Ingress protection - IP55</p>	<p>Standards:</p> <p>Electrical Installations in ships: Luminaires and Lighting Accessories IAW BS IEC 60092-306 Incorporating the following standards:</p> <ul style="list-style-type: none"> Degrees of protection provided by enclosures IAW BS EN 60529 Electrical safety IAW BS EN 60598-1 Impact (Mechanical Strength) IAW BS EN 60598-1 EMC, emissions and immunity IAW BS EN 60945 Environmental testing IAW IEC 60068 <p>Luminaires for emergency lighting IAW BS EN 60598-2-22 Photo-biological safety of lamps and lamp systems IAW BS EN 62471 Night Vision Device (NVD) compatibility IAW DEF STAN 02-587 Part 3 Dual Mode Lighting IAW DEF STAN 02-587 Parts 1 & 3 Total Harmonic Distortion (THD) IAW Lloyds Rules and Regulations 2018 Radiated Susceptibility – Test No DRS02.B IAW DEF STAN 59-411 Part 3 Mechanical Shock in Naval Vessels IAW MAP 01-470 RoHS Directive IAW 2011/65/EU WEEE Producer Registration Number WEE/AU676OYF</p>
--	---

Operating Temperature Range

-35°C to +55°C, except for battery back-up units where normal range is +5°C to +30°C, and extended range is -30°C and +50°C but with reduced battery life and duration of light output.

<p>Consolite is a long established leader in night vision lighting for military platforms, designing and manufacturing lighting for NVGs for over 25 years, including lighting for aircraft, ships and ground use.</p> <p>Consolite's design facility permits the calculation of lighting requirements for any space from a single compartment to an entire ship.</p> <p>Consolite's test facility includes the latest equipment required for testing night vision compliance to any relevant standard plus goniophotometric equipment for full 360 degree characterisation of luminaire light output.</p>
--