



## Consolite® Technology Ltd

St. Martins Business Park, Bells Lane, Zeals, Wiltshire, BA12 6LY, UK

Tel: +44 (0) 1747 840900 - E mail: sales@consolite.co.uk

www.consolite.co.uk - Certified to ISO9001:2015

### CTL-371 General Lighting Luminaire, LED, Exterior, EX Zone 2

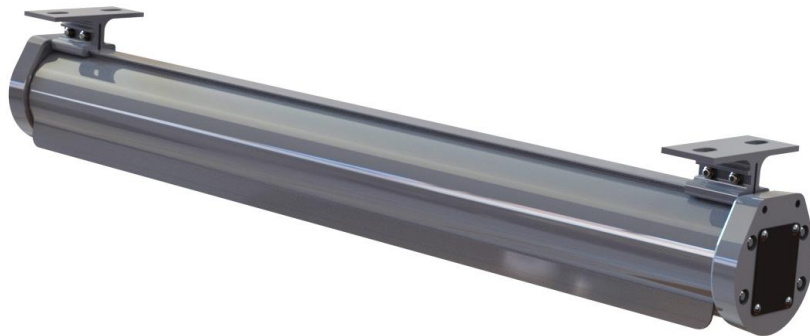
A range of surface mounting, exterior, general lighting LED luminaires for a wide variety of applications, offering different lighting modes. Robust design and construction makes them suitable for the most challenging of environments where EX Zone 2 protection is required.

#### Features

LED technology - low power, high reliability  
High output, neutral colour white light  
Rugged construction, extruded aluminium housing  
Painted grey for full protection  
IP67 rated for full weatherproofing  
Explosion proof, EX Zone 2  
Simple installation - wired ready for connection

#### Options

Second mode red, low level white or green  
NVG compatibility  
115V or 230V AC  
Variety of mounting options  
Variety of finishes  
Add on battery back-up module



Standard 1800lm variant



Unit with battery back-up module for emergency lighting



## Consolite® Technology Ltd

St. Martins Business Park, Bells Lane, Zeals, Wiltshire, BA12 6LY, UK

Tel: +44 (0) 1747 840900 - E mail: sales@consolite.co.uk

www.consolite.co.uk - Certified to ISO9001:2015

### Part Number Guide

The commonest variants are show below. Other combinations available on request.

P/No 115V	P/No 230V	Function	Output (lm)	IP Rating	Power (W)	Dimensions (mm)	Weight (kg)
CTL-371-110	CTL-371-510	Single mode – full bright white	1800	67	28	740 x 85 x 100	4.0
CTL-371-111	CTL-371-511	Single mode – white, dimmable	1800	67	28	740 x 85 x 100	4.0
CTL-371-120	CTL-371-520	Dual mode – bright white + LLW	1800	67	28	740 x 85 x 100	4.0
CTL-371-121	CTL-371-521	Dual mode – bright white + LLW, 2 neutrals	1800	67	28	740 x 85 x 100	4.0
CTL-371-122	CTL-371-522	Dual mode – bright white + red safety	1800	67	28	740 x 85 x 100	4.0
CTL-371-130	CTL-371-530	Dual mode – bright white + LLW NVG	1800	67	28	740 x 85 x 100	4.0
CTL-371-131	CTL-371-531	Dual mode – bright white + LLW NVG, 2 neutrals	1800	67	28	740 x 85 x 100	4.0
CTL-371-133	CTL-371-533	Dual mode – bright white + LLW enhanced NVG output	1800	67	28	740 x 85 x 100	4.0
CTL-371-134	CTL-371-534	Dual mode – bright white + green NVG	1800	67	28	740 x 85 x 100	4.0
CTL-371-135	CTL-371-535	Dual mode – bright white + green NVG, 2 neutrals	1800	67	28	740 x 85 x 100	4.0
CTL-371-136	CTL-371-536	Dual mode – bright white + green enhanced NVG output	1800	67	28	740 x 85 x 100	4.0
CTL-371-140	CTL-371-540	Single mode – full bright white	3600	67	48	1210 x 85 x 100	5.7
CTL-371-141	CTL-371-541	Single mode – white, dimmable	3600	67	48	1210 x 85 x 100	5.7
CTL-371-150	CTL-371-550	Dual mode – bright white + LLW	3600	67	48	1210 x 85 x 100	5.7
CTL-371-151	CTL-371-551	Dual mode – bright white + LLW, 2 neutrals	3600	67	48	1210 x 85 x 100	5.7
CTL-371-152	CTL-371-552	Dual mode – bright white + red safety	3600	67	48	1210 x 85 x 100	5.7
CTL-371-160	CTL-371-560	Dual mode – bright white + LLW NVG	3600	67	48	1210 x 85 x 100	5.7
CTL-371-161	CTL-371-561	Dual mode – bright white + LLW NVG, 2 neutrals	3600	67	48	1210 x 85 x 100	5.7
CTL-371-163	CTL-371-563	Dual mode – bright white + LLW enhanced NVG output	3600	67	48	1210 x 85 x 100	5.7
CTL-371-164	CTL-371-564	Dual mode – bright white + green NVG	3600	67	48	1210 x 85 x 100	5.7
CTL-371-165	CTL-371-565	Dual mode – bright white + green NVG, 2 neutrals	3600	67	48	1210 x 85 x 100	5.7
CTL-371-166	CTL-371-566	Dual mode – bright white + green enhanced NVG output	3600	67	48	1210 x 85 x 100	5.7

Non EX-rated variants are also available, shown on a separate datasheet.

EX Zone 1 units are available with part numbering CTL-461-XXX, also on a separate datasheet.

Battery back-up for emergency lighting can be provided through an add-on module, CTL-371-920, suitable for all variants of CTL-371 and CTL-461 lights. The module has full EX Zone 1 compliance and can be disconnected without affecting the IP rating.

The battery back-up module will add 215mm to the overall length, and less than 2kg to the weight of each light.

Lights with battery back-up fitted can be ordered by adding -BB to the standard part number, e.g. CTL-371-XXX-BB.

Standard NVG output is balanced for situations where all lights in an area are dual mode. Enhanced NVG output is for cases where not all lights are dual mode.



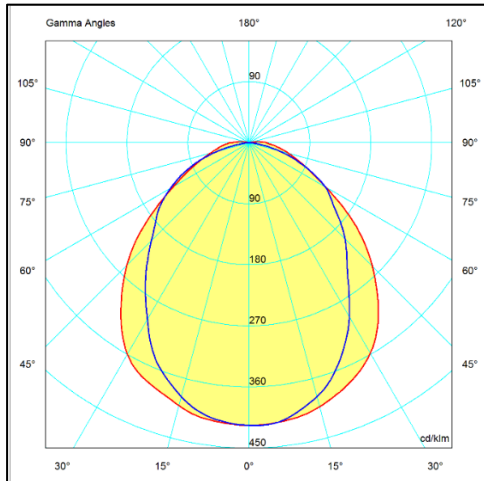
## Consolite® Technology Ltd

St. Martins Business Park, Bells Lane, Zeals, Wiltshire, BA12 6LY, UK

Tel: +44 (0) 1747 840900 - E mail: sales@consolite.co.uk

www.consolite.co.uk - Certified to ISO9001:2015

### Light output distribution



IES/LDT files available on request

### Standards

Electrical Installations in ships: Luminaires and Lighting Accessories IAW BS IEC 60092-306

Incorporating the following standards:

- Degree of protection BS EN 60529
- Electrical safety BS EN 60598-1
- Impact (Mechanical Strength) BS EN 60598-1
- EMC, emissions and immunity BS EN 60945
- Environmental testing IEC 60068

Photo-biological safety of Lamps and Lamp Systems BS EN 62471

Night Vision Device (NVD) compatibility DEF STAN 02-587 Part 3

Dual Mode Lighting DEF STAN 02-587 Parts 1 & 3

Total Harmonic Distortion (THD) Lloyds Rules and Regulations 2018

Radiated Susceptibility – Test No DRS02.B DEF STAN 59-411 Part 3

Mechanical Shock in Naval Vessels MAP 01-470

RoHS Directive 2011/65/EU

Potentially Explosive Atmospheres Directive\* 2014/34/EU

- General requirements EN IEC 60079-0
- Increased safety “e” EN IEC 60079-7
- Protection type “n” EN 60079-15

\* See additional self-certification certificate

WEEE Producer Registration Number WEE/AU676OYF

### Installation

Installation details outlined in CTL-371-XXX-EX-Zone2-INST.

Connection points detailed in CTL-371-XXX-ID & CTL-371-XXX-EX-Zone-2-INST.

Consolite is a long established leader in night vision lighting for military platforms, designing and manufacturing lighting for NVGs for over 25 years, including lighting for aircraft, ships and ground use.

Consolite's design facility permits the calculation of lighting requirements for any space from a single compartment to an entire ship.

Consolite's test facility includes the latest equipment required for testing night vision compliance to any relevant standard plus goniophotometric equipment for full 360 degree light characterisation of luminaire output.