



# Consolite® Technology Ltd

St. Martins Business Park, Bells Lane, Zeals, Wiltshire, BA12 6LY, UK

Tel: +44 (0) 1747 840900 - E mail: sales@consolite.co.uk

Certified to ISO9001:2015

## CTL-470 Bathroom Light

A range of LED lighting for bathroom use on naval vessels.

Designed to be fitted above sinks and mirrors, in showers and on the ceiling.

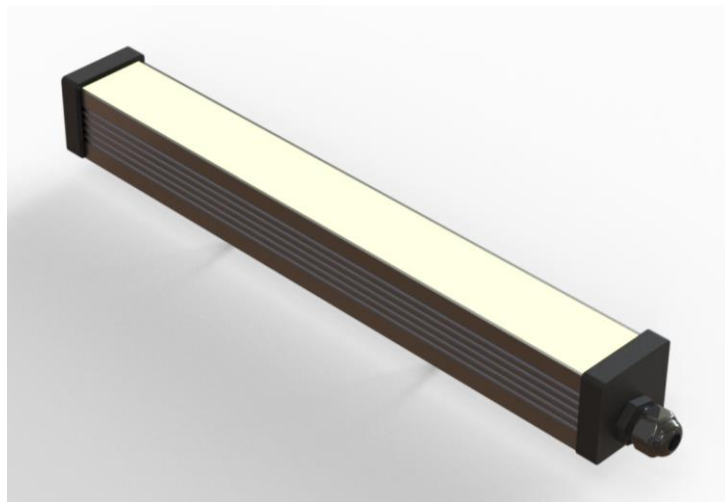
The lights are supplied in various lengths and light outputs, fitted with flying leads.

### Features

High output, neutral white light  
Rugged alloy construction  
IP67 to provide a high-level of protection

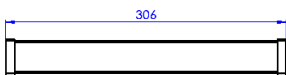
### Installation

Simple installation or retrofit  
85-264V AC supply

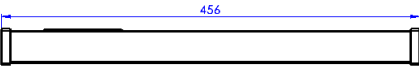


CTL-470 - standard variant

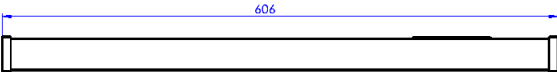
CTL-470-001



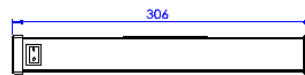
CTL-470-002



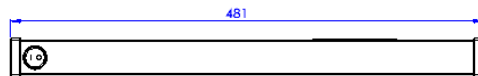
CTL-470-003



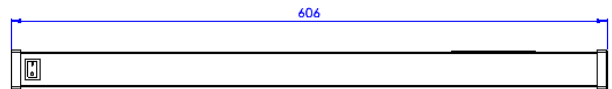
CTL-470-004



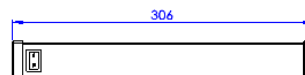
CTL-470-005



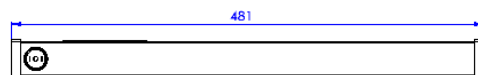
CTL-470-006



CTL-470-007



CTL-470-902





## Consolite® Technology Ltd

St. Martins Business Park, Bells Lane, Zeals, Wiltshire, BA12 6LY, UK

Tel: +44 (0) 1747 840900 - E mail: sales@consolite.co.uk

Certified to ISO9001:2015

### Part Number Guide

| CTL-470 | Function                                 | Output (lm) | Voltage (V AC) | Power (W) | Dimensions (mm) | Weight (kg) |
|---------|--|-------------|----------------|-----------|-----------------|-------------|
| -001    | Single mode light                        | 800         | 85-264         | 9         | 306 x 38 x 36   | 0.5         |
| -002    | Single mode light                        | 1200        | 85-264         | 13        | 456 x 38 x 36   | 0.75        |
| -003    | Single mode light                        | 1600        | 85-264         | 18        | 606 x 38 x 36   | 1           |
| -004    | Single mode light with local switch      | 400         | 85-264         | 5         | 306 x 38 x 36   | 0.6         |
| -005    | Single mode light with local switch      | 600         | 85-264         | 7.5       | 481 x 38 x 36   | 0.85        |
| -006    | Single mode light with local switch      | 800         | 85-264         | 18        | 606 x 38 x 36   | 1.1         |
| -007    | Two level output light with local switch | 200/400     | 85-264         | 2.5/5     | 306 x 38 x 36   | 0.6         |
| -901    | Dual mode light with external switch     | 1200/20     | 85-264         | 15/1      | 456 x 38 x 36   | 0.6         |
| -902    | Dual mode light with local switch        | 1200/2      | 85-264         | 15/1      | 481 x 38 x 36   | 0.85        |

#### Standards

- BS EN/ISO 60092-306 Electrical Installations in ships: Luminaires and Lighting Accessories
- BS EN 60529 Degree of protection
- BS EN 60598-1 Electrical safety
- BS EN 60598-1 General requirements for testing
- BS EN 60533 EMC, emissions and immunity
- IEC 60068 Environmental testing
  - Vibration IAW IEC 60068-2-6, Test Fc
  - Shock IAW IEC 60068-2-27, Test Ea
- BS EN 62471 Photo-biological safety
- RoHS directive 2011/65/EU

#### Installation

Installation details in CTL-470-XXX-INST

Connection details in CTL-470-XXX-ID & CTL-470-XXX-INST

Consolite is a long established leader in night vision lighting for military platforms, designing and manufacturing lighting for NVGs for over 25 years, including lighting for aircraft, ships and ground use.

Consolite's design facility permits the calculation of lighting requirements for any space from a single compartment to an entire ship.

Consolite's test facility includes the latest equipment required for testing night vision compliance to any relevant standard plus goniophotometric equipment for full 360 degree light characterisation of luminaire output.