



Consolite® Technology Ltd

St. Martins Business Park, Bells Lane, Zeals, Wiltshire, BA12 6LY, UK

Tel: +44 (0) 1747 840900 - E mail: sales@consolite.co.uk

Certified to ISO9001:2015

CTL-251 Small Floodlight, LED

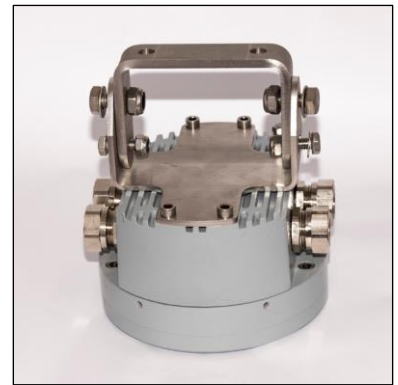
A range of LED floodlights for interior or exterior use, offering different lighting modes. Robust design and construction makes them suitable for the most challenging of environments.

Features

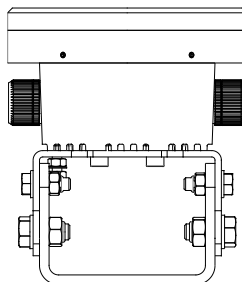
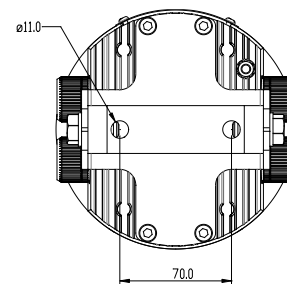
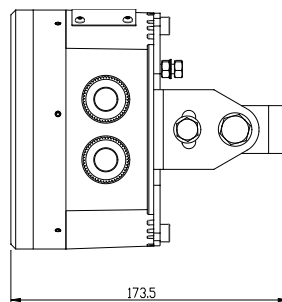
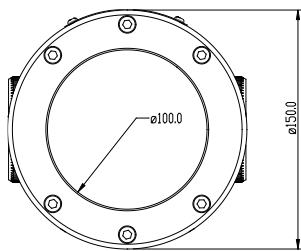
LED technology - low power, high reliability
High output, neutral colour white light
Rugged construction, machined aluminium housing
Anodised and grey painted for full protection
Designed to IP67 for full weatherproofing
Simple installation - ready for connection

Options

Primary mode red or blue outputs
Second mode low level red or NVG white
NVG compatibility
24V (9-31V range), 115V or 230V AC
Variety of beam angles
Various shades and mounting arrangements



CTL-251-003 is shown below.





Consolite® Technology Ltd

St. Martins Business Park, Bells Lane, Zeals, Wiltshire, BA12 6LY, UK

Tel: +44 (0) 1747 840900 - E mail: sales@consolite.co.uk

Certified to ISO9001:2015

Part Number Guide

P/No	Function	Intensity (cd)	Beam angle (FWHM)	IP Rating	Voltage V AC	Power W	Dimensions* mm	Weight kg
CTL-251-003	Dual mode – full bright white/low level NVG white, focused beam	6400	35°	67	115	34	173.5 x 150.0 dia	6
CTL-251-004	Dual mode – full bright white/low level NVG white, diffused output	N/A	N/A	67	115	34	173.5 x 150.0 dia	6
CTL-251-005	Single mode white, diffused output	N/A	N/A	67	115	34	173.5 x 150.0 dia	6
CTL-251-006	Single mode blue, focused beam	2900	35°	67	115	34	173.5 x 150.0 dia	6
CTL-251-013	Dual mode – full bright white/low level NVG white (higher output), focused beam **	6400	35°	67	115	34	173.5 x 150.0 dia	6
CTL-251-903	Single mode red, diffused output	N/A	N/A	67	115	34	173.5 x 150.0 dia	6
CTL-251-909	Single mode red, focused beam	1090	35°	67	115	34	173.5 x 150.0 dia	6

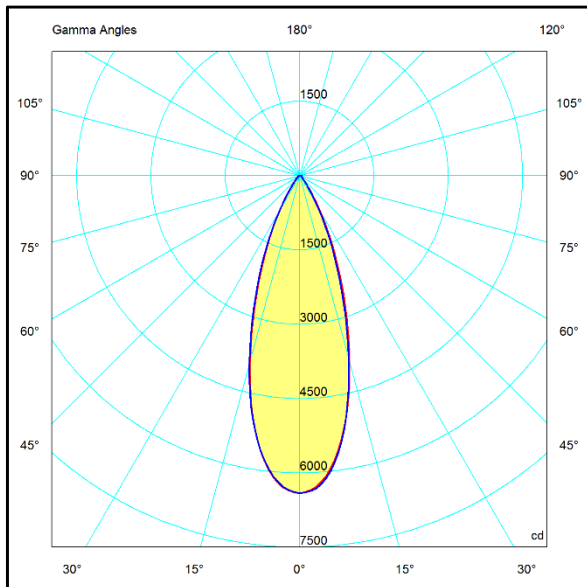
* Including mounting bracket

** NVG mode intensity approximately 3x higher than standard versions

Other options available on request, e.g. 230V, different beam angles

Light output distribution

35° variant shown. IES/LDT files available on request



Standards

BS EN/ISO 60092-306 incorporating:

- IEC 60598 for general requirements in construction, testing and marking
- IEC 60529 for IP protection
- IEC 60079 for Hazardous areas
- IEC 60533 and IEC 60945 for EMC
- EN13032 for photometric data
- IEC 60068-2 for Vibration, Shock and Climatic conditions

Shock tested to MAP 01-470 Grade C,D

NVG compatibility IAW Def Stan 02-587 Pt3

Consolite is a long established leader in night vision lighting for military platforms, designing and manufacturing lighting for NVGs for over 25 years, including lighting for aircraft, ships and ground use.

Consolite's design facility permits the calculation of lighting requirements for any space from a single compartment to an entire ship.

Consolite's test facility includes the latest equipment required for testing night vision compliance to any relevant standard plus goniophotometric equipment for full 360 degree light characterisation of luminaire output.