



Consolite® Technology Ltd

St. Martins Business Park, Bells Lane, Zeals, Wiltshire, BA12 6LY, UK

Tel: +44 (0) 1747 840900 - E mail: sales@consolite.co.uk

Certified to ISO9001:2015

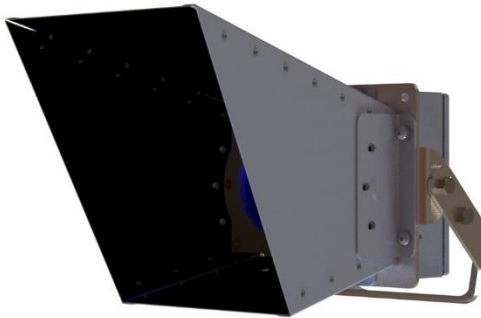
CTL-332-00x Datasheet

LED Visually Secure (VS) Floodlight Range

The LED VS Floodlight range was developed in conjunction with the UK MOD to illuminate flight decks of varying sizes uniformly with NVG compliant lighting. The lights are fully dimmable and are filtered to prevent wet deck reflections. Dedicated control system available.

Features

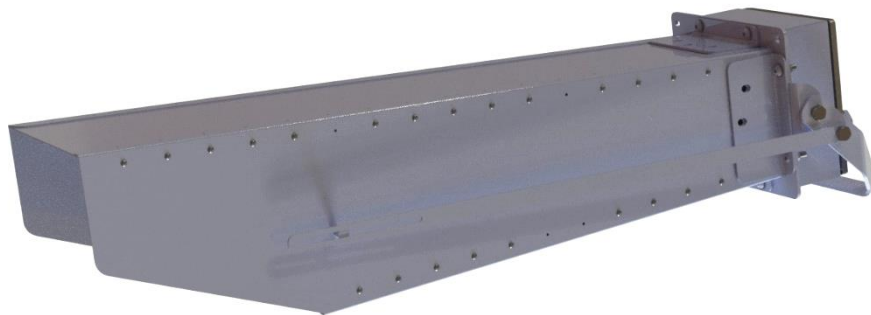
- NVG compatible
- Wet deck filtered
- Focused and uniform to ensure complete light control
- Hood to ensure light security
- Anti glare coatings on the interior of the cone
- Fully dimmable



Short range (5-15m)



Mid range (10-25m)



Long range (20-50m)



Consolite® Technology Ltd

St. Martins Business Park, Bells Lane, Zeals, Wiltshire, BA12 6LY, UK

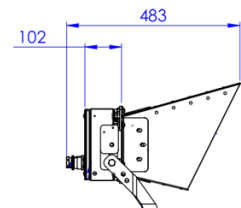
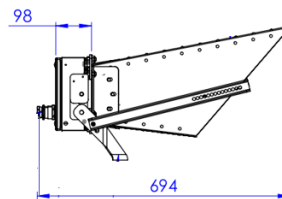
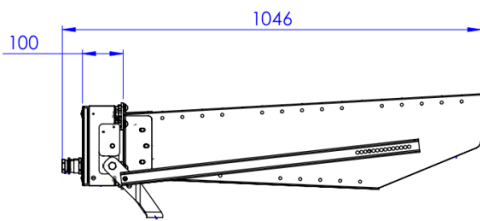
Tel: +44 (0) 1747 840900 - E mail: sales@consolite.co.uk

Certified to ISO9001:2015

Part Number Guide

P/No	Function	Description
CTL-332-001	7.5 degree floodlight	Long range visually secure floodlight
CTL-332-002	20 degree floodlight	Mid-range visually secure floodlight
CTL-332-003	35 degree floodlight	Short range visually secure floodlight
CTL-332-005	Dimming controller	Versatile control (VCS) mounted controller
CTL-332-007	Light power controller	Powered Variac module
CTL-332-008	Funnel light	Local floodlight for tight group lighting

Dimensional Drawing



IES/LDT files available on request

Standards:

- IEC 60598 for general requirements in construction, testing and marking
- IEC 60529 for IP protection
- IEC 60533 and IEC 60945 for EMC
- EN13032 for photometric data
- IEC 60068-2 for Vibration, Shock and Climatic conditions
- NVG compatible IAW Def Stan 02-587 Pt3

Consolite is a long-established leader in night vision lighting for military platforms, designing and manufacturing lighting systems for NVGs for over 25 years, including lighting for aircraft, ships and ground use.

Consolite's design facility permits the calculation of lighting requirements for spaces from a single compartment to an entire ship.

Consolite's test facility includes the latest equipment required for testing night vision compliance to any relevant standard plus goniophotometric equipment for full 360 degree light characterisation of luminaire output.